

CAMBRIDGESHIRE GARDENS TRUST

Registered Charity no. 1064795 www.cambridgeshiregardenstrust.org.uk

About Us

The green spaces of parks, gardens and landscapes that so many people enjoy have been left to us by the vision, dedication and skill of our forebears. A few are being created by contemporary designers and artists. However, with ever-increasing development, our designed green legacy can easily be nibbled away or lost entirely. Cambridgeshire Gardens Trust seeks to conserve, enhance and restore the historic landscapes, parks and gardens within the county for the enjoyment of the public. The Trust also seeks to raise public awareness and understanding of the value of landscapes, parks and gardens as part of our local and national heritage.

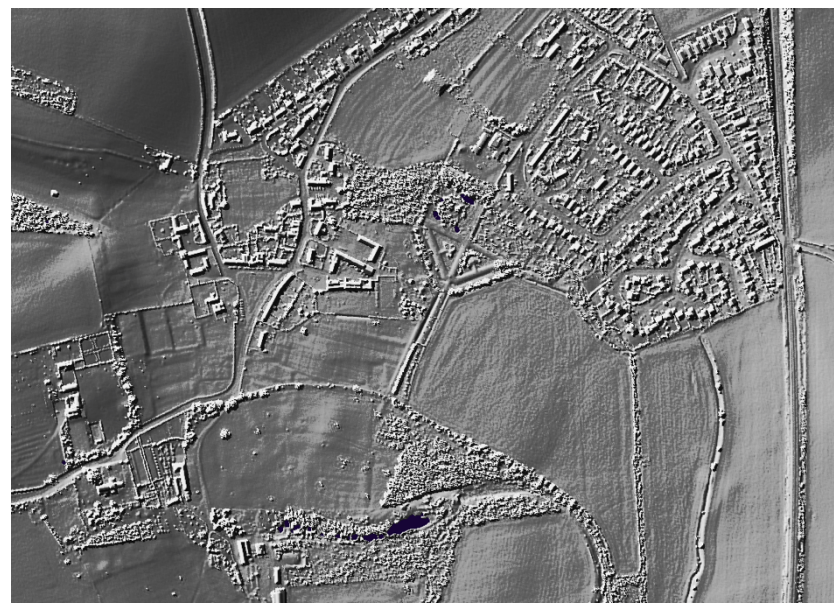
The Trust pursues these aims by researching and recording historic and contemporary landscapes, in both rural and urban settings within the county, and by transferring knowledge through the newsletter, lectures, study days and publications. We are also a focal point for local groups to advise on conservation, restoration work and management plans. Through our affiliation with The Gardens Trust, we provide informed comment to planners and foster a consultative approach to development proposals.

The Trust has an active programme of visits, often to gardens not normally open to the public, complemented by talks and study events such as this. There are also opportunities to become more deeply involved through research, outreach, planning and publishing activities. If you aren't already a member, why not join: the annual subscription is just £15 (£25 for a couple) and provides benefits including two newsletters a year, access to a programme of visits, talks and study days at membership rates, discounted prices for our publications and a chance to engage with a diverse group of stimulating members and guests.

For more information visit www.cambridgeshiregardenstrust.org.uk, where there is a downloadable membership form, or contact our Membership Secretary Sarah Hundleby via admin@cambridgeshiregardenstrust.org.uk. We look forward to welcoming you to another CGT event in the future.

CAMBRIDGESHIRE GARDENS TRUST STUDY DAY 2022

*Archaeology to garden history:
blurring the boundaries and bringing new light*



LIDAR map of the 17C Tackley Water Gardens, visible as symmetric triangular features.

LIDAR data ©Environment Agency & Natural Resource Wales
Map rendering by houseprices.io Creative Commons Attribution Licence CC BY 4.0

Saturday 12 March 2022

Storey's Field Centre, Eddington Avenue, Cambridge CB3 1AA
(Free parking in Madingley Park & Ride, Madingley Road CB3 0EX)

Coffee from 10:00am

Members £25 / non-members £30, to include coffee and light lunch.

If possible, please pay by BACS transfer to Cambridgeshire County Gardens Trust, sort code 20-29-68 a/c 30347639, quoting your name as reference. Exceptionally cheques payable to Cambridgeshire Gardens Trust may be sent to Jane Sills, The Willows, Ramsey Road, Ramsey Forty Foot PE26 2XN. Email jane.d.sills@gmail.com.

Archaeology to garden history: blurring the boundaries and bringing new light

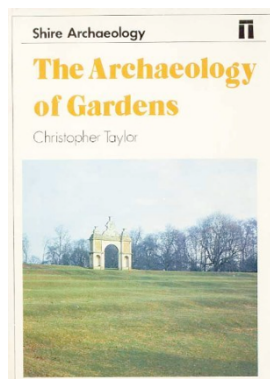
Our Study Day, inspired by the late Christopher Taylor, will include the impact of archaeological methods on elucidating Garden History. We are sure you will enjoy lively discussion with our eminent speakers and relax over a light lunch with speakers, members and guests.

Provisional Programme

10:00am	Coffee and registration	
10:20am	Welcome and introduction	<i>Liz Whittle</i>
10:25am	A tribute to Christopher Taylor: the contribution of archaeology	<i>Prof. Susan Oosthuizen</i>
11:15pm	Short break	
11:30am	Archaeology of Belhus Tudor Gardens, Essex	<i>Dr Twigs Way</i>
12:20pm	Buffet lunch served in the foyer	
1:00pm	Lancelot Brown, a reputation restored	<i>Bridget Flanagan</i>
1:30pm	The 17C Tackley Water Garden	<i>Liz Whittle</i>
2:00pm	Short break	
2:15pm	Harold Peto, garden designer	<i>Alison Moller</i>
3:00pm	Closing remarks and vote of thanks	<i>Liz Whittle</i>



Christopher Taylor and the cover of 'The Archaeology of Gardens', his ground-breaking book published by Shire Archaeology in 1983.



Our Speakers

Liz Whittle, the current CGT Chair, is a garden historian with interests in the Tudor and Jacobean periods. A graduate from Newnham College, Liz was formerly Inspector of Historic Parks and Gardens for Wales and is now a Council member of the Welsh Historic Gardens Trust. She serves on the conservation committee of the Gardens Trust and as a trustee of the National Botanic Garden of Wales. Having settled in Cambridgeshire, living in Wilburton, Liz is also a trustee of Hobson's Conduit Trust in Cambridge.

Dr Twigs Way, a previous Chair of CGT, has worked in historic landscapes for over twenty years, from medieval parks to gardens and landscapes of all periods. At present she blends lecturing, research, writing, publishing, crafting landscape management plans, visiting historic sites, and the history of female gardeners. Twigs is currently working with a volunteer group in Essex to document historic parks and gardens in the area of Thurrock and the associated 'Land of the Fanns'. She relaxes by weeding her own garden, sometimes with a mattock...

Prof. Susan Oosthuizen is currently Emeritus Professor of Medieval Archaeology at the University of Cambridge Institute of Continuing Education. Her teaching and research focus on rights of common, and on the development of the English landscape between about 400 and 1300 AD. Bridging archaeology, history and historical geography, Susan's research has been published in several books and numerous papers. Her most recent volume on the *Anglo-Saxon Fenland* was published by Windgather at the beginning of July 2017, and her book on *The Emergence of the English* was published by Arc-Humanities Press in 2019.

Bridget Flanagan is a tenacious history researcher with a focus on the social history of Huntingdonshire and the influence of the unique Ouse Valley landscape. Her books include *Artists along the Ouse 1880-1930* and *A Commanding View – The Houses and Gardens of Houghton Hill*. She is a Trustee of the Great Ouse Valley Trust which seeks AONB status for the area. Bridget authored a recent CGT Newsletter article to set the record straight on the Brown - Cowling family connection in Fenstanton and thereby restore Brown's reputation.

Alison Moller read Archaeology at Leicester and has an MA in Garden and Landscape History from the Institute of Historical Research. A qualified teacher, Alison is an active researcher and educator. She is a member of Cambridgeshire, Hertfordshire and Essex Gardens Trusts, for whom she has run various Garden History courses over several years, often under the GT umbrella. If that wasn't enough, Alison is a professional Wine Educator with interests in whisky and champagne, in which role she arranged the champagne reception at Fenstanton Church Centre in 2016 as part of the CGT Brown Tercentenary celebrations.